

# Glendon



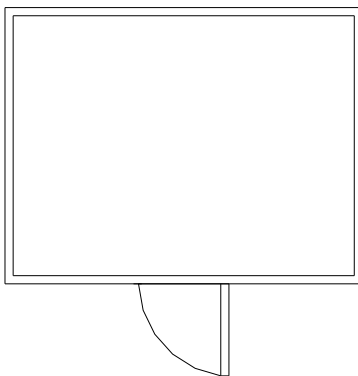
Walk-in Coldstores

- \* **No fixed sizes, manufactured to fit**
- \* **Top quality heavy duty equipment**
- \* **Internal or external plant options**
- \* **Fully automatic operation**
- \* **Temperature monitoring alarms standard**
- \* **Low noise plant available for built up areas**
- \* **Sliding door option**
- \* **Free survey and quotation**

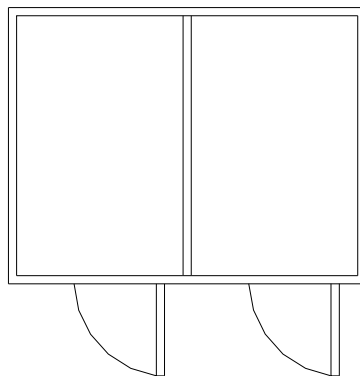


### Typical Walk-in Coldstore Layouts

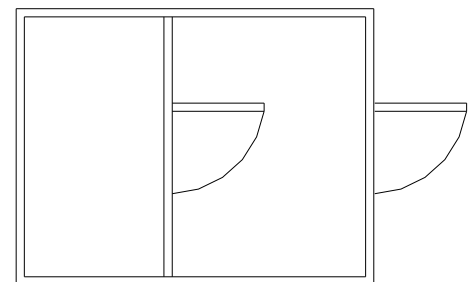
**Single Section  
Floorless or Floored**



**Dual Compartment Side by Side  
Temperature ranges optional**



**Dual Compartment Walk-Thru  
Temperature ranges optional**



Glendon Products Ltd.  
 Unit 5 St. James Road  
 Corby  
 Northants NN18 8AL  
 Tel: +44 (0)1536403010  
 Fax: +44 (0)1536266629  
[www.glendonproducts.com](http://www.glendonproducts.com)